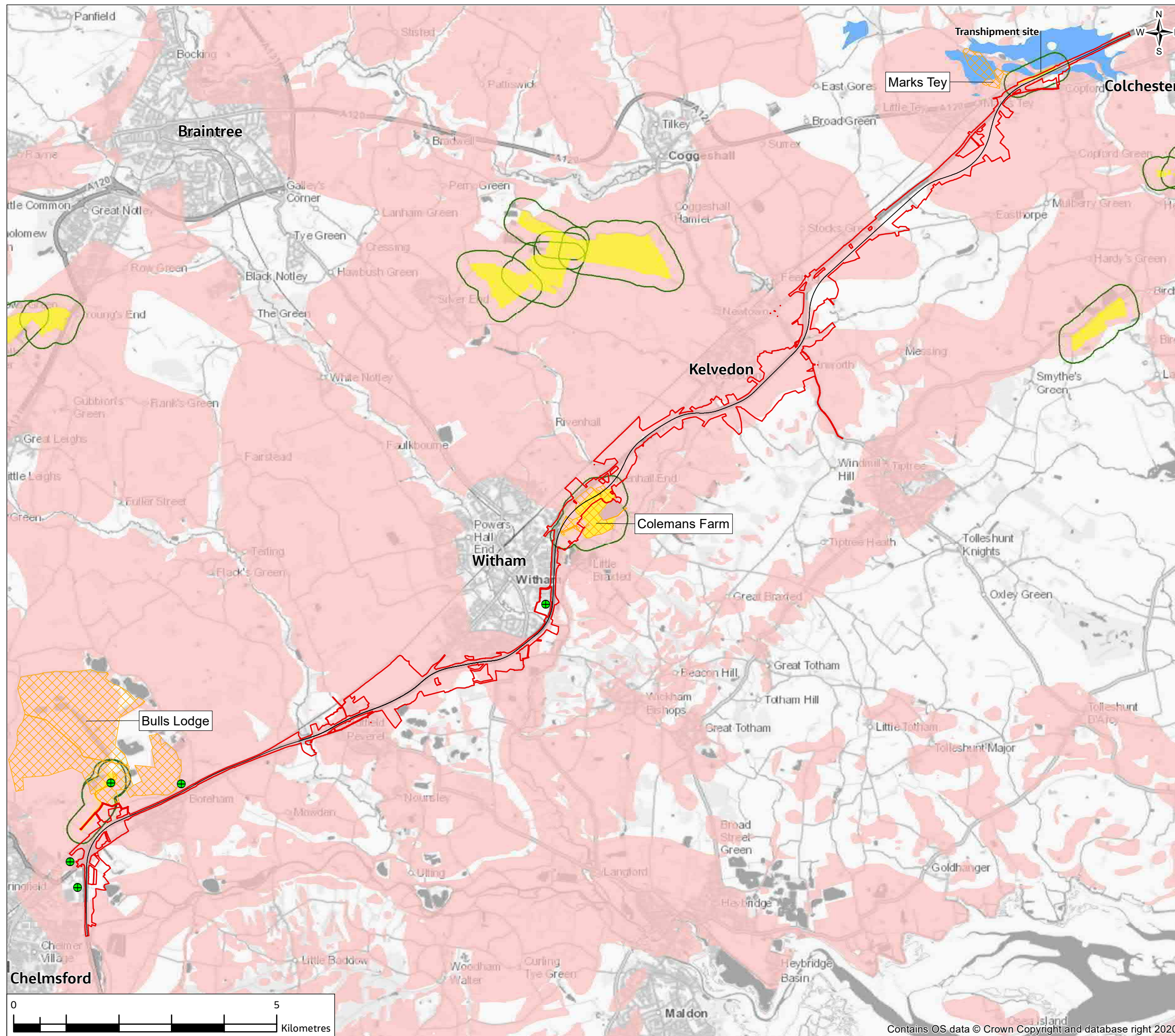


A12 Chelmsford to A120 widening scheme

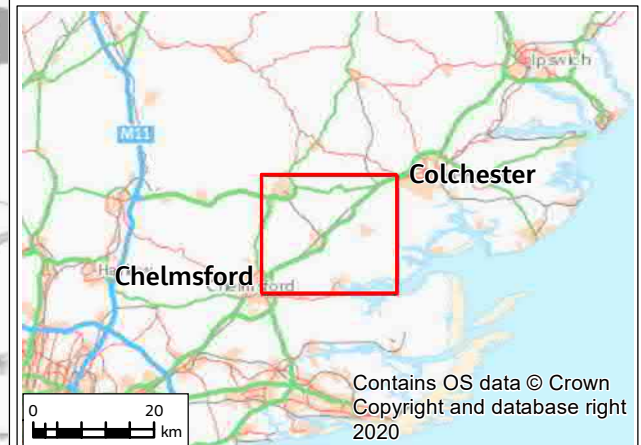
**PRELIMINARY ENVIRONMENTAL
INFORMATION REPORT**

**CHAPTER 11 – MATERIAL ASSETS & WASTE
FIGURES**

FIGURE 11.1



- Legend**
- Provisional Order Limits
 - Proposed Scheme Centreline
 - Mineral Safeguarding Area - Brick Clay
 - Mineral Safeguarding Area - Sand Gravel
 - Minerals Consultation Area
 - Minerals Local Plan Areas
 - Existing (Operational) Minerals Sites
 - Essex Waste Local Plan – Waste Infrastructure Sites 2017 (indicative)



P03	28/04/21	For consultation	AD	DL	DL	SG
Rev.	Rev. Date	Purpose of revision	Drawn	Check'd	Rev'd	Appr'd
Contractor			Designer			
Client						
Project						
A12 CHELMSFORD TO A120 WIDENING SCHEME						
Drawing Title						
PEIR MINERALS AND WASTE INFRASTRUCTURE AND DESIGNATIONS SHEET 1 OF 1						
Drawing Status						
S4 - SUITABLE FOR STAGE APPROVAL						
Scale @ A3		1:70000			DO NOT SCALE	
Jacobs No.		B36601D1			Rev P03	
Client No.		HE551497				
Drawing Number						
HE551497-JAC-ESU-SCHW-SK-GI-0001						

